

# Tissue Basket with Liner

Dimensions: 5”L x 5”W x 5”H

## **MATERIALS:**

Spokes: 1/2” FF natural, cut 10 @ 20”

Weavers: 1/2” FF natural, cut 8 @ 25”  
1/4” FF dyed, cut 3 @ 25”  
#3 RR natural, cut 1 @ 50”

Rim: 1/2” FO, cut 1 @ 25”  
1/2” FF, cut 1 @ 25”  
1/4” FF, cut 1 @ 25”  
Seagrass, cut 1 @ 25”  
Medium cane or 1/4” FF dyed

Trim: liner made from a fat quarter



## **BASE:**

Mark centers on wrong side and wet spokes. Place 5 staves horizontally with the wrong side up. Weave the center vertical stave, matching center points. Weave 2 vertical staves on either side. True the base to match the size of a square tissue box, approximately 4.25” x 4.25”. With #3 RR, twine a locking row. Bend up.

**SIDES:** Insert the tissue box often to ensure proper size of the basket. The sides of the basket should be about 4.75” high prior to the rim row.

Rows 1-2: 1/2” FF natural

Rows 3-5: 1/4” FF dyed

Rows 6-10 or 11: 1/2” FF natural (number of rows depends on tissue box size)

Last row: 1/4” FF natural as hidden rim row

Pack. Cut and tuck.

## **RIM:**

Use 1/2” FO natural for the outside rim and 1/2” FF natural as the inside rim. Medium seagrass is the rim filler. Lash with medium cane or 1/4” FF dyed reed.

## **LINER:**

See attached instructions.

## Tissue Basket with Liner

**NOTE:**

You can use other widths of reed for the sides as well as incorporate other weaving patterns – just make sure that you target the basket height to match the tissue box.



Woven with slab cane



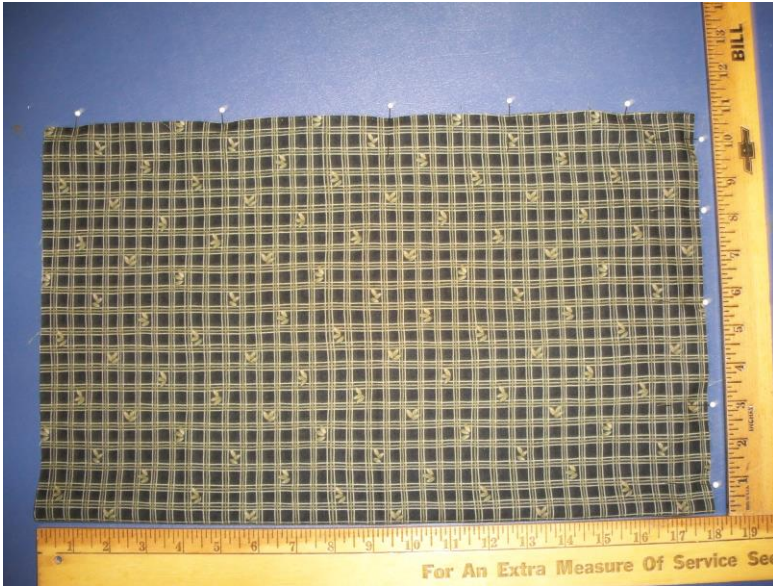
Woven with 1/2" FF dyed reed



Woven with slab cane and tortoise cane

## LINER FOR TISSUE BASKET

The liner is made from a “fat quarter” or a piece of material that is 22” x 18”. Select a cotton fabric that complements a color in the basket or room decor. All seams are double seams so that there are no edges to fray.

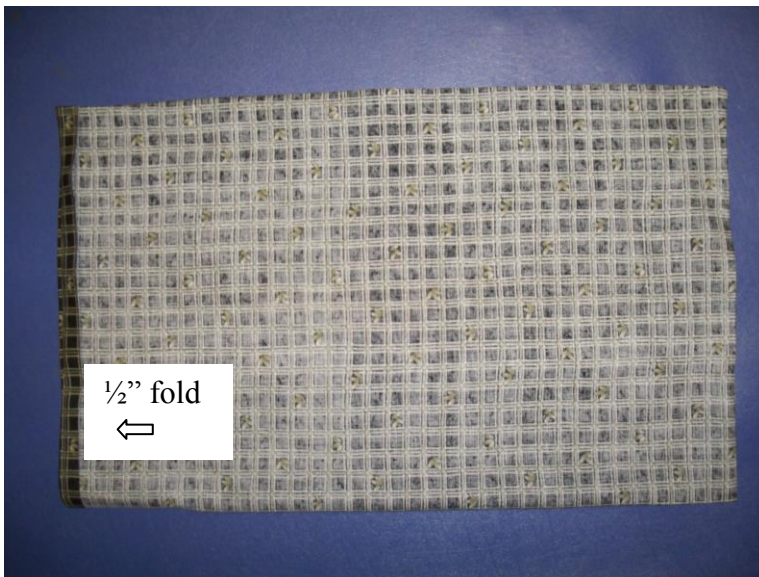


Fold the material wrong sides together so that the piece measures 18” x 11”. Pin along cut long side and one short side.

Sew a ¼” seam.

Press the material.

Trim the seams if needed.



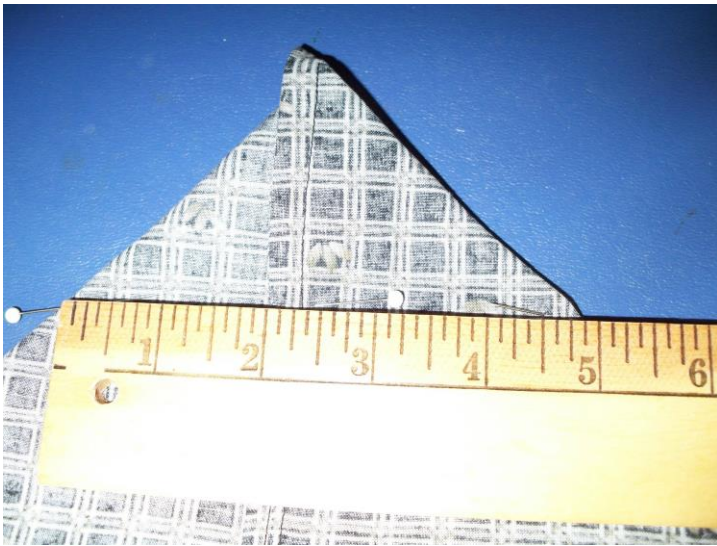
Turn the material so that the wrong side is out.

Press the seams. Also press a fold for the hem at the open end of the material – about ½”. This will make it easier to do the wide hem at the end of the process.

Sew another seam along the already sewn seams. Be careful to enclose the raw edges of the first seam when you make this seam.

Unfold the ironed “hem” when you sew the second seam.





You are ready to make the “dog ears” at the bottom of the liner. This is what creates the square bottom.

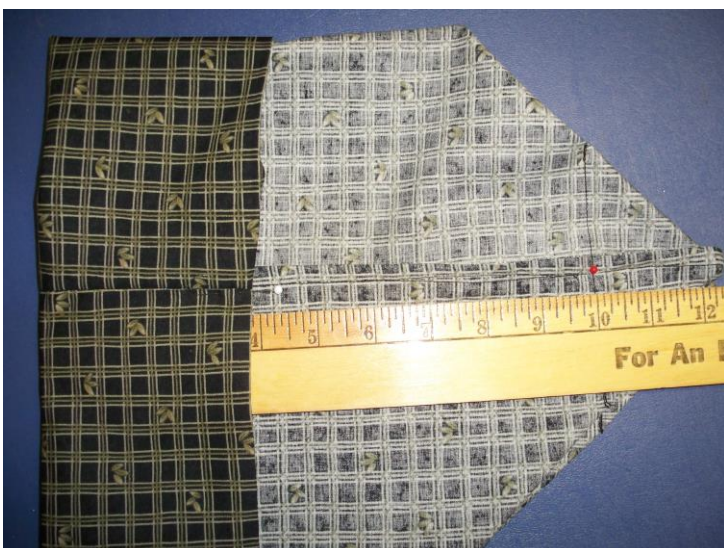
Fold the material so that the side seam/fold and the bottom seam line up. The corner where the seams join makes the peak in the picture.

Place a ruler across this “dog ear” and mark with pins where the material measures 5” as this line will be where the seam is located. Sew the seam.

Do the same measurement and marking for the other side. Sew the seam.



The liner should look like this.



Put the “dog ears” together and fold the liner flat. Also fold down the hem material. Ensure the ½” hem that was previously pressed is folded under. Measure approximately 10” from the “dog ear” seam line. The remaining material is the hem that makes the “ruffle”. Pin the hem all around.

Sew the hem.



Turn the liner right side out. Make sure that the “dog ears” are folded flat on the bottom of the liner. Drop in a box of tissues.



Use a pony tail elastic band to make the ruffle. I prefer the bands that do not have a metal connector.



Insert the covered tissue box in the basket.