



14 1/2" D  
Beginner

**Autumn Wreath**  
Cathy Sylvester

Let's get ready for fall by weaving this Festive Autumn Wreath! This easy project is perfect for beginners. After weaving, you can leave your reed natural or stain it with coffee for a rich earthy look. Students will choose a pre-made silk flower swag and a ready made wired bow to complete the project. You can make new swags to change with the seasons.

**Additional tools needed:** Spray bottle, shears

TH-2-1	\$ 25.00
TH 1:00-3:00	2 Hours



Wrist length x 1" W  
Advanced Beginner

**Highland Woven Bracelet**  
Sandy Atkinson

Woven bracelet frame comes in a variety of sizes to fit all wrists. Weave one of three designs in your color choice of tan, dark green or wine. Also woven into each bracelet is the studs on leather, a unique weaving material. Weaving skills from this class can be used on a basket handle.

TH-2-2	\$ 18.00
TH 1:00-3:00	2 Hours



10" L x 6 1/2" W x 5" H w/o handle  
Beginner

**Poppy - Antique Spool Bobbin**  
Becky Bechtel

This class will be open to your creativity. Various antique wood spool bobbins (some with thread/yarn and some without) will be provided, as well as a variety of reeds for you to design your own basket. A pre-stained and poly finished hard wood base will start you out on your one-of-a-kind creation.

TH-2-3	\$ 48.00
TH 1:00-3:00	2 Hours



7" L x 5 1/2" W x 6" H  
Advanced Beginner

**Critter Cradle**  
Debbie Mroczenski

Designed to hold my Granddaughters "Beanie Babies" and "Critters". This little Critter cradle starts with a unique swirl-covered base. The hood is an open lattice weave. Then finish with a braided rim. Color choices available.

TH-2-4	\$ 30.00
TH 1:00-3:00	2 Hours



2 1/2" L x 2 1/2" W x 2 1/2" H  
Beginner

**Hexahedron**  
Karen Kotecki

A Hexahedron is a three-dimensional figure with 6 equal sides. Create this one with a poster board structure that serves as a mold and stays inside the basket. Then weave over, under and around the 6 triangular surfaces and discover that you are weaving a double-walled basket without even trying. Add a cord hanger with beads and sea grass tassel. Material included for a second Hex. *Patience and getting used to glue are required*

TH-2-5	\$ 35.00
TH 1:00-3:00	2 Hours



5" D x 10" H w/o handle  
Beginner

**Water Bottle Holder**  
Julie Kleinrath

Woven on a round wood base, this basket is woven around a plastic mold that is included with the class. Your choice of a plain shaker tape handle or a designed canvas handle. Coordinated dyed reed will be available to add to the design.

TH-2-6	\$ 30.00
TH 1:00-3:00	2 Hours

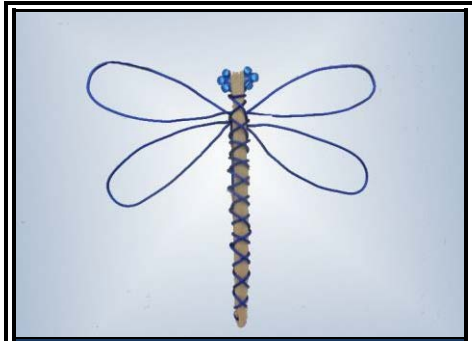


3 1/2" L x 3 1/2" W x 6" H  
Beginner

**Woven Autumn Candle Jar**  
Cathy Sylvester

Let's get ready for the autumn season by weaving this scented soy jar candle! Students will learn to weave around a form, shape while twining and personalize a design choosing from wide variety of colors, jar rings and tie-ons.

TH-2-7	\$ 18.00
TH 3:30-5:30	2 Hours



4" L x 5" W  
Beginner

**Dragonfly**  
Karen Kotecki

Dragonfly is just so cute. This brightly-colored insect is created with beads, reed, waxed cord and wire. Lots of techniques to learn to get it just right. Once you do, you want to create a garden-full of Dragonfly's. Material for a second included. ***Patience with wire required***  
**Additional tools needed:** Beader's nylon jaw pliers if you have them.

TH-2-8	\$ 35.00
TH 3:30-5:30	2 Hours



4" D x 3 1/2" H  
Intermediate

**Glass Jar Pincushion Basket**  
Julie Kleinrath

This woven base basket starts with a 6 sided base and is twined. A band of chain waling in dyed round reed is added to the design to give it a bit of color. Kit includes a glass mason jar with an embroidered basket and bead embellishment designed and made by the teacher. An assortment of colors and embroidered baskets will be available to choose from.

**Additional tools needed:** Favorite packing tool

TH-2-9	\$ 40.00
TH 3:30-5:30	2 Hours



8" D  
Advanced Beginner

**Sophia's Dream Catcher**  
Laura Lee Zanger

The dream catcher is fun to make. The basic weaving is over-under-around-and-through. There will be a variety of kit colors from which to choose at class time. Beads, feathers and a spider charm embellish the dream catcher. ***This is for all levels of weavers***

**Additional tools needed:** 8 small wooden clothespins

TH-4-10	\$ 65.00
TH 1:00-5:00	4 Hours



2" D x 1 1/2" H  
Advanced Beginner

**Mini Cedar**  
Polly Adams Sutton

Create X's on every cedar spoke, as the ash remains on the inside of this mini basket. The finish is a folded border. ***Experience with twining required***  
**Additional tools needed:** Small packing tool, basket shears, tapestry needle, spray bottle

TH-4-11	\$ 80.00
TH 1:00-5:00	4 Hours



5 1/2" L x 4" W x 4" H w/o handle  
Intermediate

**Jo Jo**  
Gina Kieft

Jo Jo starts on a wood base with the spokes glued in prior to class. Weave stop/start rows for the perfect shape up the sides. Learn triple twine with a step up. A petite closed notched handle is attached for easy carrying. An embellishment of Josephine Knots are woven on all four sides of the basket. An assortment of colors will be offered.

**Additional tools needed:** Small waxed linen Weave Rite tool

TH-4-12	\$ 34.00
TH 1:00-5:00	4 Hours



8" D x 5" H w/o handle  
Intermediate

**Cross Over No Fail Cat**  
Gail Hutchinson

Learn my "No Fail" cat head technique, three rod-wale with a step-up and cross overs. Choose from several color combinations. Top it off with a beautiful hand carved oak Indian swing handle.

**Additional tools needed:** Cable ties

TH-4-13	\$ 61.00
TH 1:00-5:00	4 Hours



5-8" D x 8"-12" H - Varies with gourd lid size  
Advanced Beginner

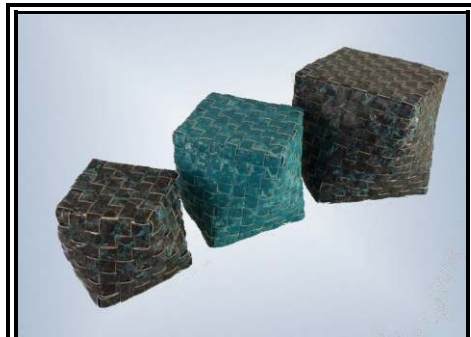
**Holiday electric candle covers**  
W/left over gourd top

Cindy Pauchey

These little cuties are an excellent way to use up any gourd tops you have left over. The twill weave, along with a checker pattern weave, form a lampshade-type gourd that sits on top of battery charged candles. The woven pattern glows through the shade providing a small glimmer.

**Additional tools needed:** Water bucket, awl

TH-4-14	\$ 60.00
TH 1:00-5:00	4 Hours



2"-3 3/8" L x 2"-3 3/8" W x 2"-3 3/8" H  
Advanced

**Paper Boxes**

Annetta Kraayeveld

Three simply elegant boxes, more challenging than you would expect and so much fun! Make them all in one color or mix and match paper. Teacher will provide a wide choice of paper (painted and pre-cut). Students will finish at least one box and may have time to start a second box.

**Additional tools needed:** Sharp scissors, small bent packer

TH-4-15	\$ 68.00
TH 1:00-5:00	4 Hours



9" L x 5" W x 5 1/2" H  
Intermediate

**Chinese New Year**  
Candace Katz

Starting on a slotted oval base weaving techniques include continuous weave, stop/start, 4 rod wale and using sea grass for the outside rim. Additional embellishment will be a Chinese coin and a variety of buttons of your choosing. Some color choice available

TH-4-16	\$ 35.00
TH 1:00-5:00	4 Hours



5" D x 12" H  
Advanced Beginner

**Frosty**

Sharon Klusmann

Shaping is emphasized in this adorable Snowman basket with stuffed Snowman Head lid. Frosty has a wooden base and many shaping tips will be shared while weaving the start/stop rows. The rim is a fleece scarf sewn on with waxed linen. Specify scarf color: red, grey plaid or blue plaid. Head and hat are all hand-made and all embellishments are included. Whitewashing demo in class.

TH-4-17	\$ 69.00
TH 1:00-5:00	4 Hours



11" D x 8" H w/o handle  
Intermediate

**Yvonne**

Becky Bechtel

Students will weave on a hardwood base while triple twining and twill weaving with reverse to create an arrow effect. A crown of jewels will be added to the waxed linen lashing using three different types of beads including crystals to catch every ray of sunlight. Choose from either Emerald Green or Coral.

**Additional tools needed:** Small packer, long beading needle. Beading tray and/or beading foam is helpful

TH-FR-10-18	\$ 78.00
TH- 3:30-5:30 & FR- 8:00-5:00	10 Hours



22" D x 20" H w/handle  
Intermediate

**Giant #10 Rib**  
Sheree Bingheim

This basket is mammoth sized! It will hold quilts, newspapers or kindling by the fireplace. It also looks amazing hung in the corner of a room! The rib frame, rim and handle are built with #10 round reed. It is woven primarily with 1/2" flat reed. Emphasis will be on getting both sides of this giant rib basket EVEN! ***Prior rib experience is needed***

**Additional tools needed:** Extra large water bucket for soaking #10 Round Reed

<b>TH-FR-12-19</b>	<b>\$ 100.00</b>
--------------------	------------------

TH- 1:00-5:00 & FR- 8:00-5:00	<b>12 Hours</b>
----------------------------------	-----------------



9" L x 4 1/2" W x 5 1/2" H w/o handle  
Advanced

**Pine Needle Tote**  
Pamela Talsky

Learn the 'Carlson Combo' creating the lattice look. NOT for the first time coiler. Learn to transition from row to row so your design is beautiful! Start with a footed base in your choice of hardwood. Finish with leather handles. ***Coiling, tension control, keeping a full gauge, start and end knowledge are required.***

**Additional tools needed:** Fine sewing scissors, needle nose pliers, Ott light/glasses

<b>TH-FR-12-20</b>	<b>\$ 185.00</b>
--------------------	------------------

TH- 1:00-5:00 & FR-8:00-5:00	<b>12 Hours</b>
---------------------------------	-----------------